

Technical specification:

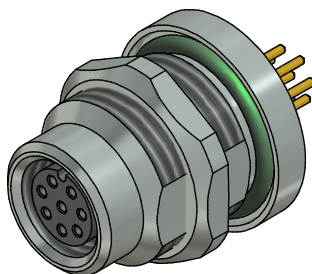
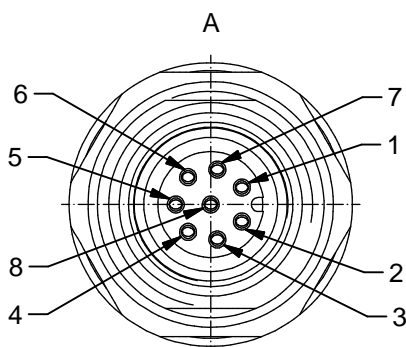
Rated voltage: IEC 61076-2-104	30 V
Current rating: IEC 61076-2-104	1,5 A at 40°C
Insulation resistance: IEC 60512	>=100 MΩ
Pollution degree: IEC 60664-1	3/2
Degree of protection: IEC 60529	IP 67, in mated condition
Temperature range:	-30°C ... +80°C
Mating cycles: IEC 60512-9a	>=100

Materials:

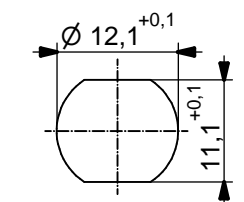
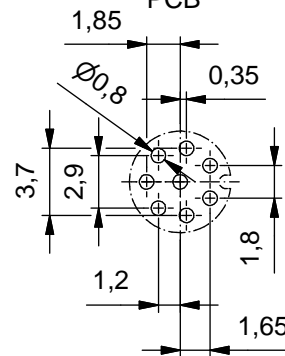
Contact:	CuZn
Contact plating:	Nickel, gold plated
Contact carrier:	PA6, UL 94
Sealing:	FPM
Counternut:	CuZn, nickel plated
Socket housing:	CuZn, nickel plated
Grouting:	Polyurethane-resin, UL 94

Installation specification:

Recommended torque:	0,6-0,8 Nm
Conec installation tool:	Torque wrench: 36-000200 Insert across flats 14: 36-000370



**Pin layout
PCB**



Minimum wall thickness
1,5mm, alternativ panel
cut-out d=12,1

Part-No.:	Description:	Pos	Length L:
42-01146	SAL - 8 - FKH8 - P5,5	8	5,5mm

DO NOT ALTER CAD DRAWING BY HAND Directive 2011/65/EU RoHS compliant	dim. in mm		title: Female socket M8x1 with dip solder, backmounting		
		date			name
		drawn	12.08.13	Christen	dwg no: 42K1A528
		appd.	12.08.13	Mankopf	
general tolerance:		0 ± 0,50mm			
		0,0 ± 0,25mm			
		0,00 ± 0,10mm	part no:		
THIS DRAWING MAY NOT BE COPIED OR REPRODUCED IN ANY WAY, AND MAY NOT BE PASSED ON TO A THIRD PARTY WITHOUT WRITTEN PERMISSION. OWNERSHIP AND COPYRIGHT OF CONEC GmbH					